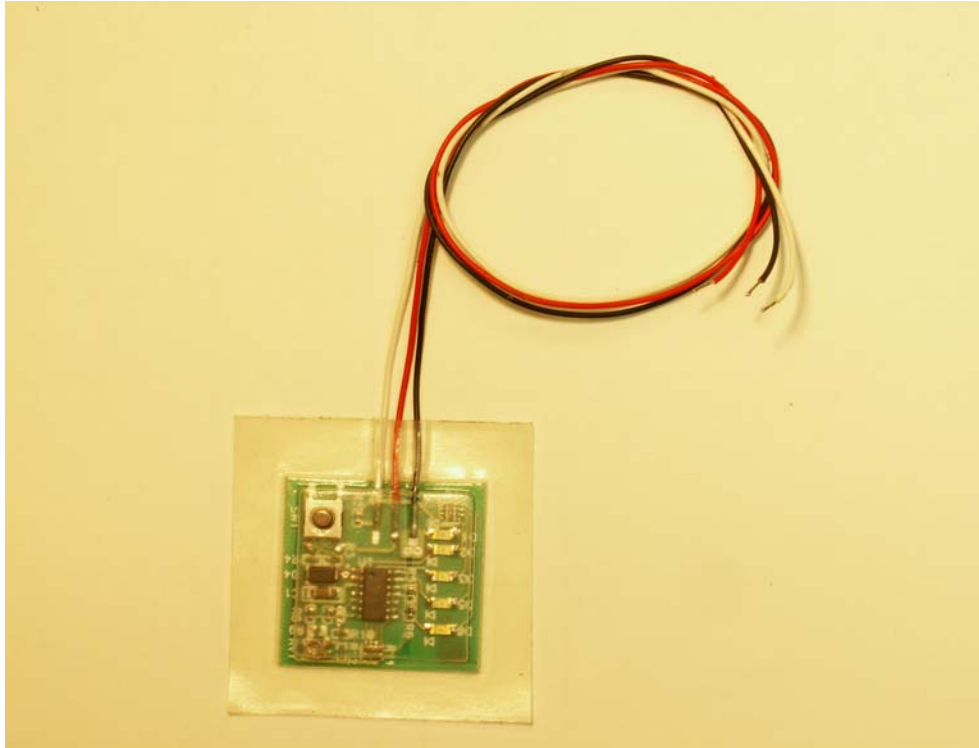


# Battery Buddie 12VLA-STD



## **General Description:**

The Battery Buddie is a Compact, Moisture Resistant, Basic Voltage Testing Appliance that attaches directly to the device under observation. The Model 12VLA is manufacture configured for 12 volt lead acid type batteries and their characteristics. The 12VLA does not require any current until activated by the Test Switch. This is to avoid discharging batteries in a storage or standby situation. The 12VLA Uses Colored LEDs to indicate four conditions: 1-Green is Good/Ready for Use. 2- Yellow is two steps of a Discharged Condition. 3- Red is battery Too Low to use—Recharge. 4- No Color—the Battery Is Dead/Very Weak—Needs Service Attention.

## **General Purposes:**

The General Purpose would be for environments where battery Knowledge is Limited, Speed and Convenience are required, Testing Tools are not available. Typical applications for Battery Buddie would be Alarm Systems, Emergency Lighting Devices, Motor Vehicles, Boats and Recreational Use Vehicles with 12Vdc Battery Systems.

## **Specifications:**

Power Requirements: 5 to 15Vdc

Power Consumption: 65mA maximum (Active State)

Power Dissipation: 0.78 watt maximum

Operating Temperature: Normal -5 to 176° F (-21 to 80°C)

Humidity: 0 to 90% Non-Condensing

# Battery Buddie 12VLA-STD



## Physical Characteristics:

Weight: 1.0 oz., 28.3 grams

### Dimensions:

Width: 2.00" (51mm)

Length: 2.00" (51mm)

Color: Standard Green

Case: Plastic Composition

## \*Environmental Characteristics:

Chemical Resistant, Oil Resistant, Water Splash Resistant

## Color Output:

Green1: +Charge Voltage Present

Green2: +12.9Vdc or higher

Yellow1: +11.3Vdc or higher

Yellow2: +9.8Vdc or higher

Red: +8.2Vdc or higher

\*Measurements Accurate to  $\pm 2\%$

## Attachment:

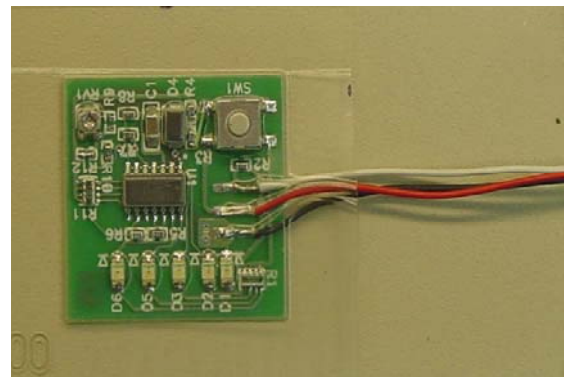
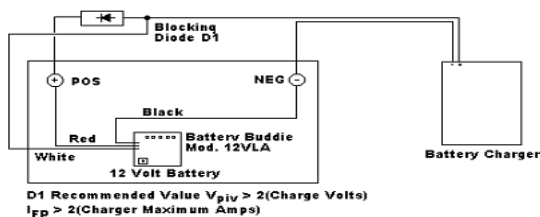
Rubberized Tape Backing

18" (50cm) Lead Wires 24 AWG Multi-Strand (Red, Black, Optional White)

## Accessories:

Optional Charger "On" Circuit with Green LED Indicator--D1

Requires external Blocking Diode. See Typical Application Diagram Below.



Gibson Engineering & Computers, Inc.  
3575 S. West Temple, #6  
Salt Lake City, Utah 84115  
Phone: 801.261.8181  
Fax: 801.261.1095  
Web: [www.GibsonEng.com](http://www.GibsonEng.com)

Available From:

\* Test Results May Vary With Specific Applications.